

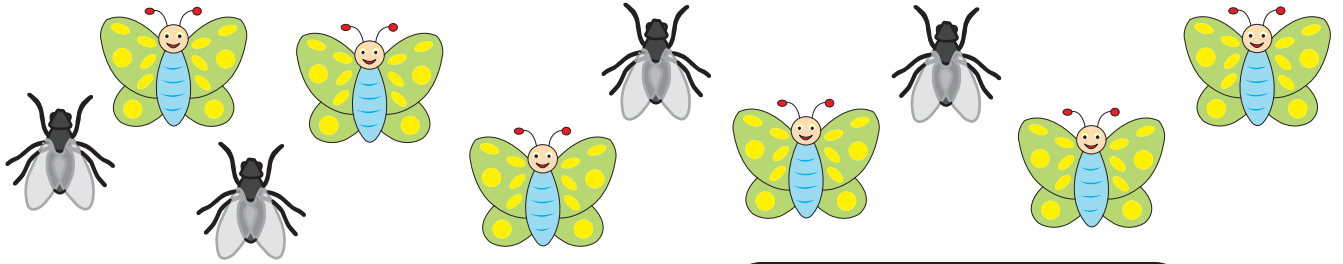


RATIO

Name _____

Score _____

1)



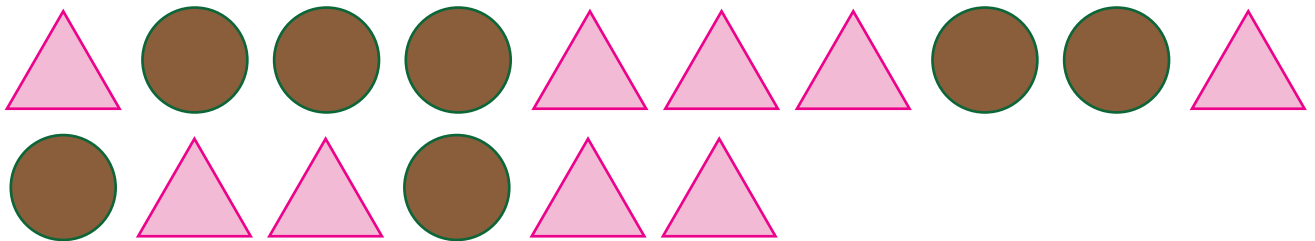
a) What is the ratio of butterflies to houseflies?

b) The ratio of insects to butterflies is

c) Write the ratio of houseflies to insects.

d) The ratio of houseflies to butterflies is

2)



a) The ratio of circles to triangles is

b) Write the ratio of triangles to circles.

c) The ratio of circles to shapes is

d) What is the ratio of shapes to triangles?



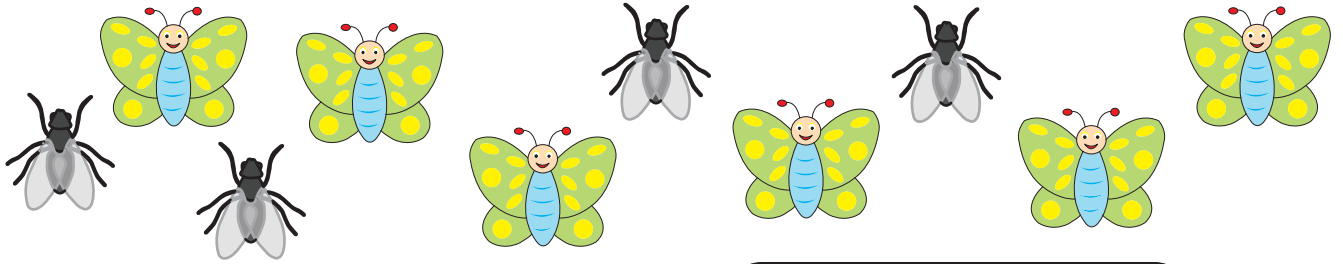
RATIO

Name _____

Score _____

Answer key

1)



a) What is the ratio of butterflies to houseflies?

6 : 4 or 3 : 2

b) The ratio of insects to butterflies is

10 : 6 or 5 : 3

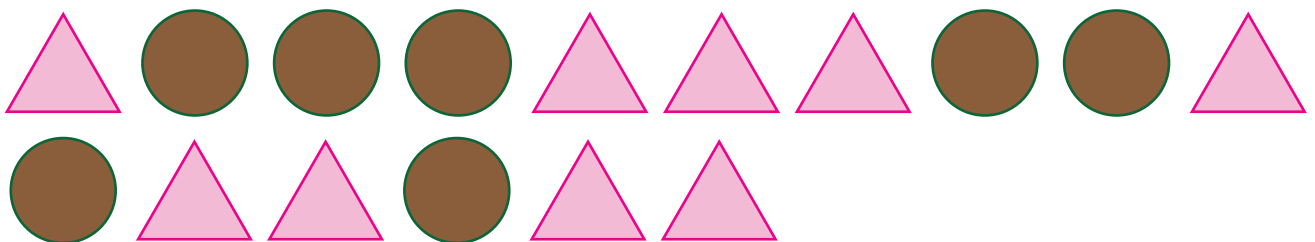
c) Write the ratio of houseflies to insects.

4 : 10 or 2 : 5

d) The ratio of houseflies to butterflies is

4 : 6 or 2 : 3

2)



a) The ratio of circles to triangles is

7 : 9

b) Write the ratio of triangles to circles.

9 : 7

c) The ratio of circles to shapes is

7 : 16

d) What is the ratio of shapes to triangles?

16 : 9